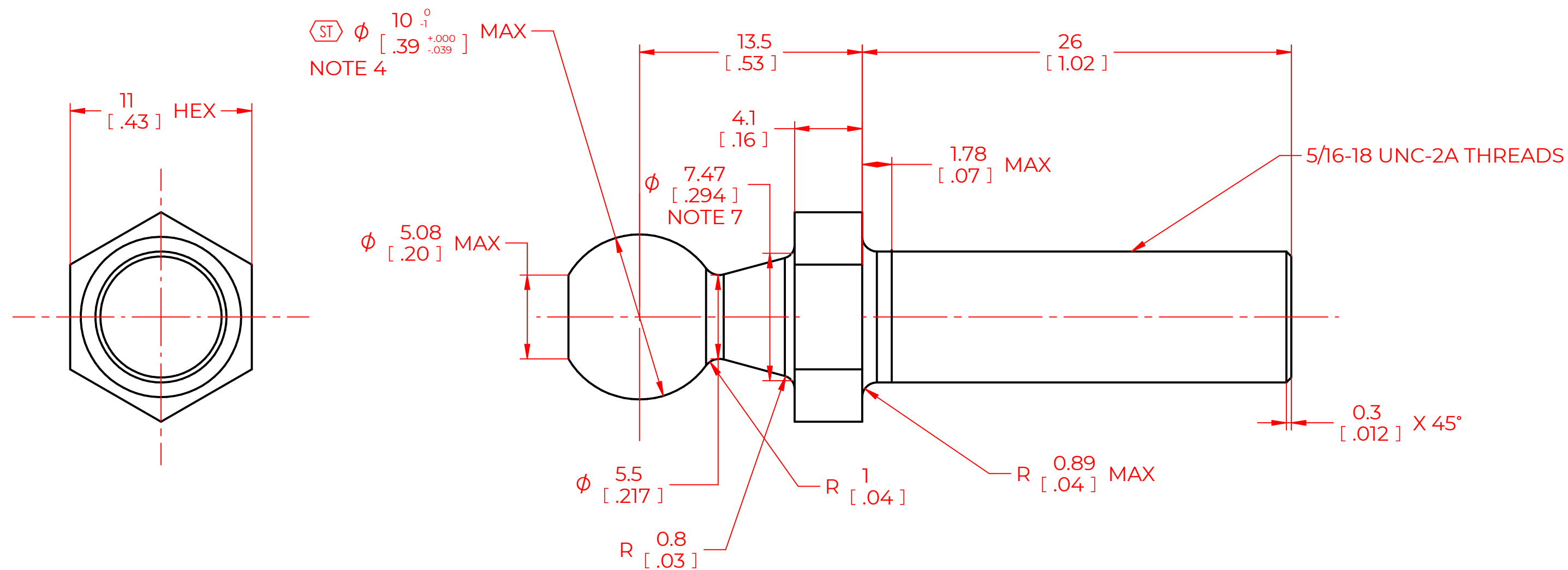


REVISION HISTORY			
REV	DESCRIPTION	DATE	APPROVED
1	UPDATED TO SHOW MORE DETAIL	11/7/22	11/7/22
2	SIZE ADJUSTMENTS	10/10/23	
3			



NOTES:

- 1) MATERIAL: Q215 STEEL.
- 2) FINISH: ZINC PLATE 0.0038 [.00015] THICK MINIMUM.
- 3) DIAMETER FLAT IS PERMISSIBLE.
- 4) SPHERICAL DIAMETER TO BE 9.88 [.389] MINIMUM BEFORE FINISH.
- 5) DIMENSIONAL LIMITS APPLY AFTER FINISH.
- 6) FEATURES IDENTIFIED AS STATISTICALLY TOLERANCED SHALL BE PRODUCED WITH STATISTICAL PROCESS CONTROLS.
- 7) THEORETICAL SHARP CORNERS.

NORMONT	DRAWN	NAME	DATE
	CHECKED	K.GERALD	11/7/2022
	PART No. NBS01-03		REV 2
THIS DOCUMENT AND ITS CONTENTS ARE THE PROPERTY OF NORMONT THIS DOCUMENT CONTAINS CONFIDENTIAL PROPRIETARY INFORMATION. THE REPRODUCTION, DISTRIBUTION, UTILISATION OR THE COMMUNICATION OF THIS DOCUMENT OR ANY PART THEREOF, WITHOUT EXPRESS AUTHORISATION IS STRICTLY FORBIDDEN.	TITLE		SCALE
	BALL STUD		5:1
	TOLERANCES	THIRD ANGLE PROJECTION	
	X.X ± 0.060	X.XX ± 0.030	
REMOVE ALL BURRS AND BREAK ALL SHARP EDGES	ALL DIMENSIONS ARE DUAL UNLESS OTHERWISE SPECIFIED	X.XXX ± 0.010	SIZE
		ANGLES ± 1°	C
		HOLES ± 0.005	SHEET 1 OF 1